

# FUSION GT



2022.12.09

**MODULAR  
DESIGN**

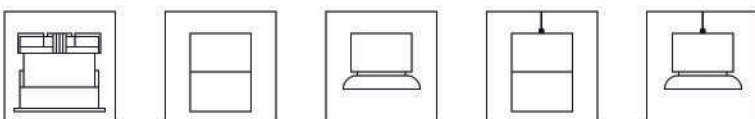
**TOOL FREE  
ASSEMBLY**

15W | 25W | 35W | 40W

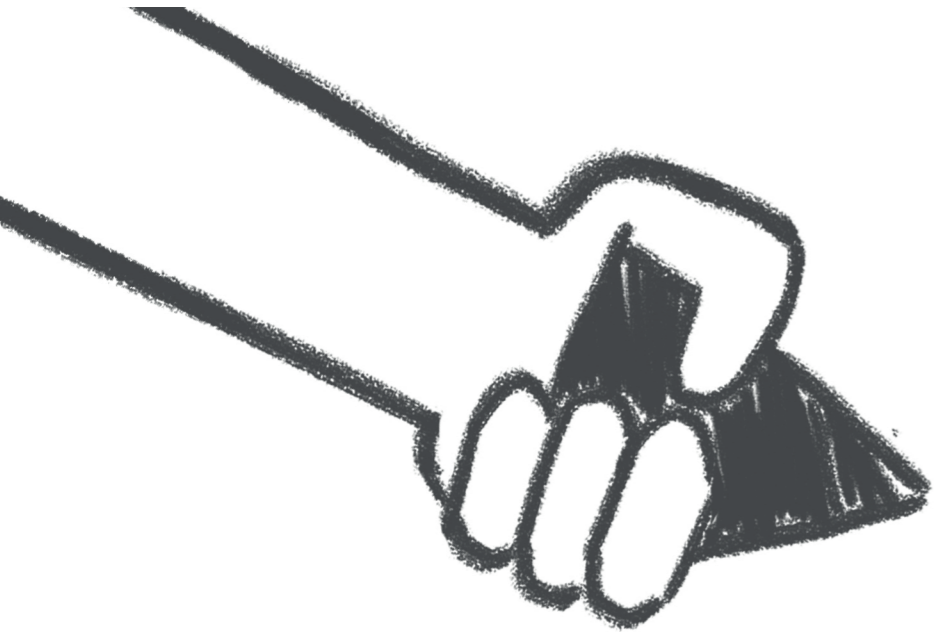
**LOW- HIGH  
WATTAGE**

design for easy  
assembly

**MULTIPLE MOUNTING  
METHODS**

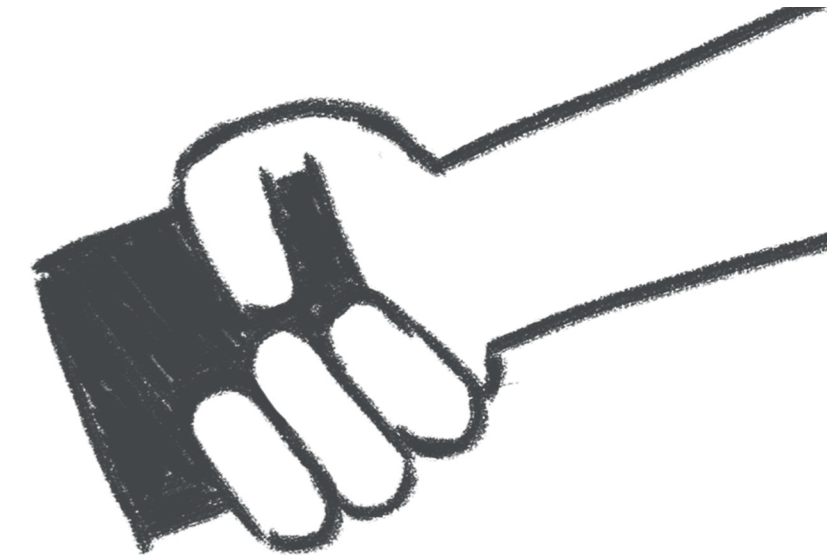


**UNISER**

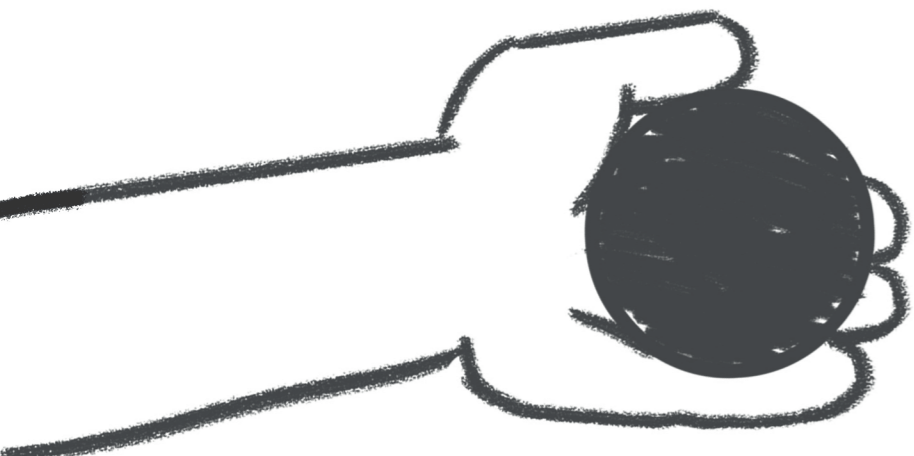


Engine

# Fusion GT



Fixture



Optics

More Module Possibilities



01

4-9  
Overview

02

10-11  
Engine

03

12  
Optics

04

13  
Fixture Options

05

14-19  
Mechanical  
Technology

06

24-28  
Parameter

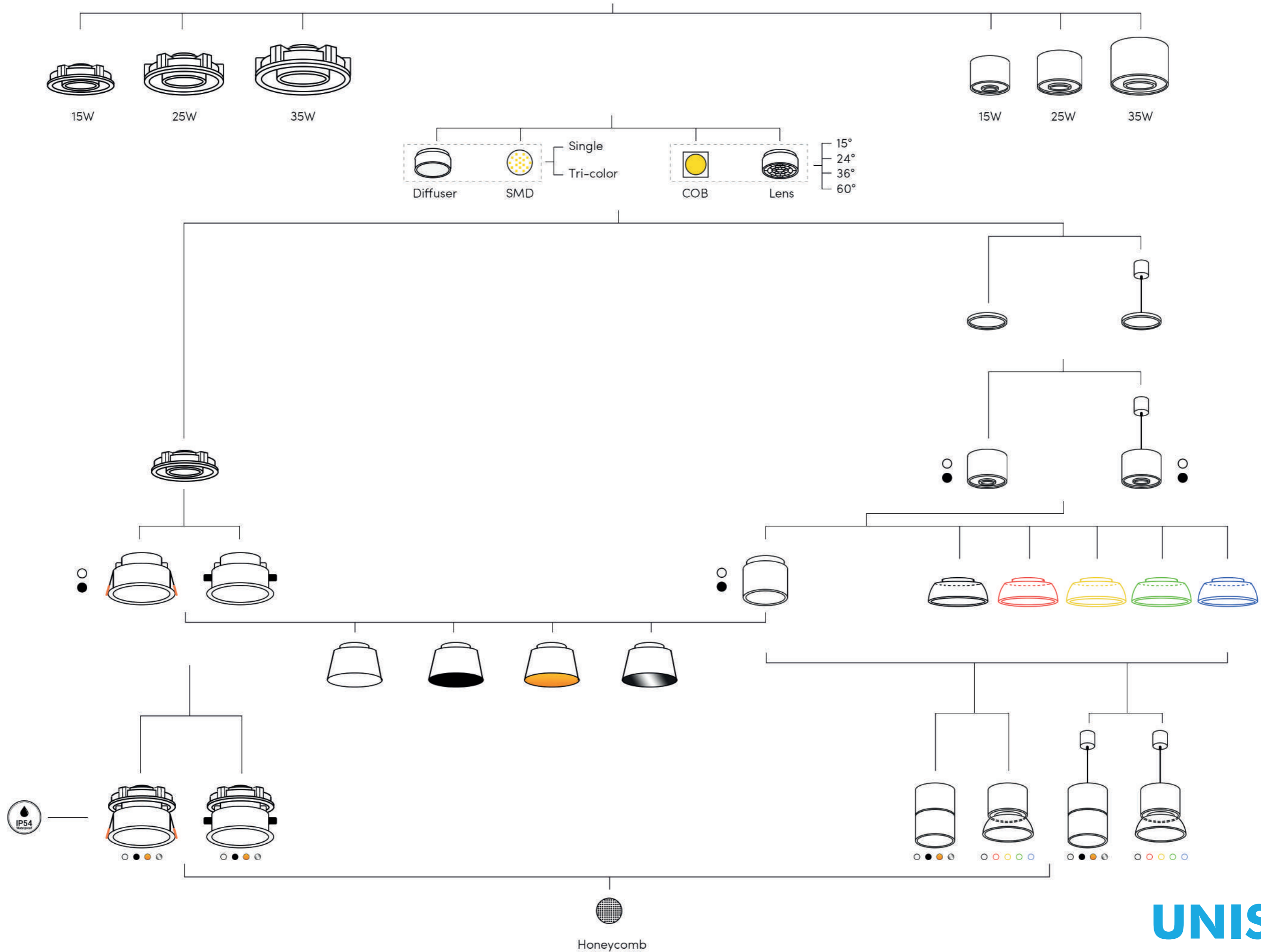
# Overview



Fusion GT is a series of modular lighting solutions for lobbies, offices, retail shops, and supermarkets. Luminaries in commercial lighting nowadays are considering more than efficiency. It's versatile to meet more needs in different ways like the texture of lighting, lighting control, and style of luminaries.

Fusion GT would greatly help maintain consistency and create possibilities in the whole commercial area as it offers CRI > 90, light modular with multiple mounting ways, interchangeable optics, and high visual-comfort reflectors as its standard configuration.

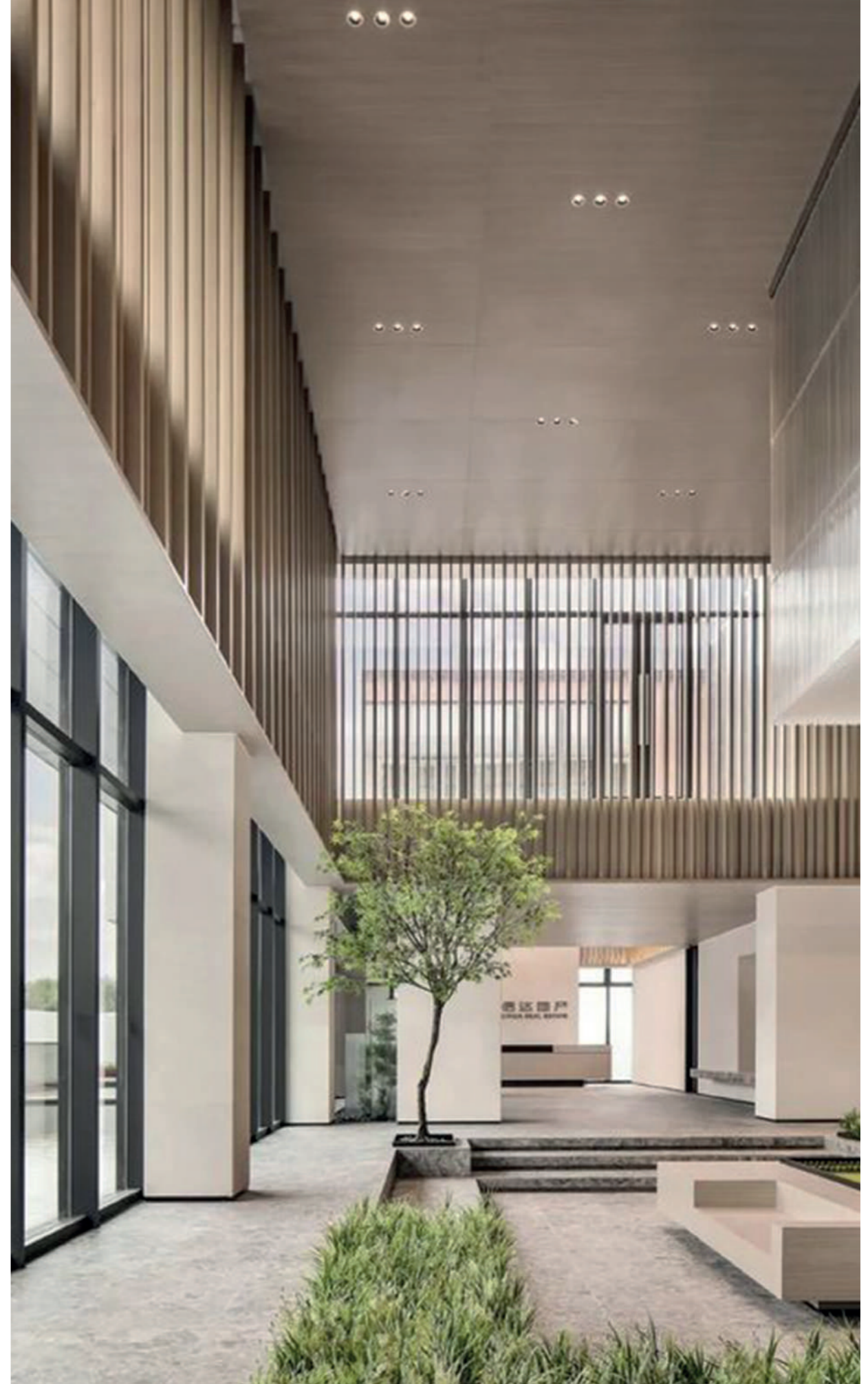
# Fusion GT







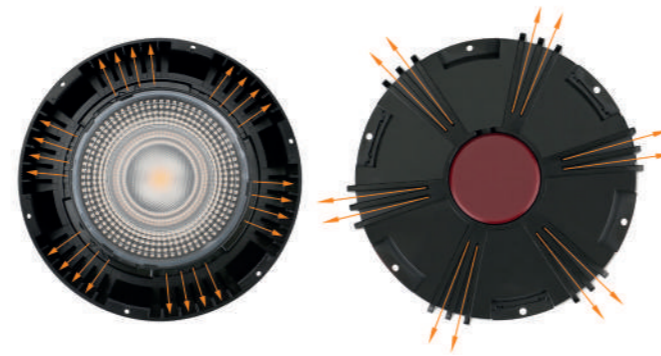
**UNISER**



**UNISER**



# LED Engine



The engine adopts combination of external and internal heatsink which can effectively guarantee heat dissipation and reduce the height of the engine.

▼ Each size of the engine can meet more than one power requirement.



**S**

10W | 15W | 20W



**M**

15W | 20W | 25W | 30W



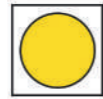
**L**

25W | 30W | 35W | 40W

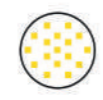


# Optics

## Main Optics



15° | 24° | 36° | 60°



70°

## Secondary Optics



Anti-glare Reflector

## • Recessed Fixture



Fusion GT has multiple fixture options for installation with recessed mounted, surface mounted and Suspension mounted.

## Fixture Options

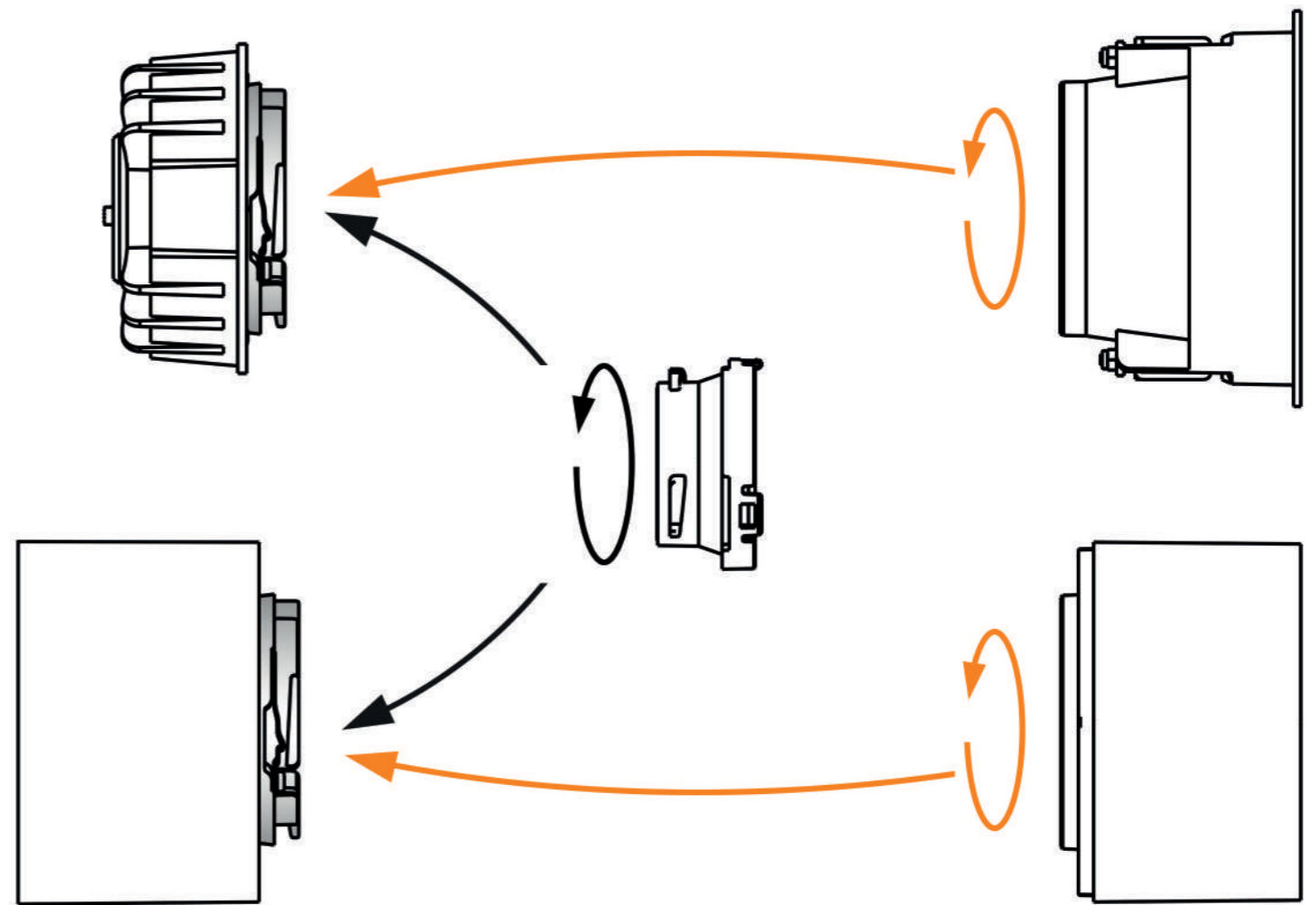
## • Surfaced|Suspension Mounted Fixture



## • Decorative Surfaced|Suspension Mounted Fixture



# Mechanical Technology



RIM is a patent design that is designed in the LED engine. It's a durable metal connecting part that makes users interchange fixtures and optics without any tools flexibly.

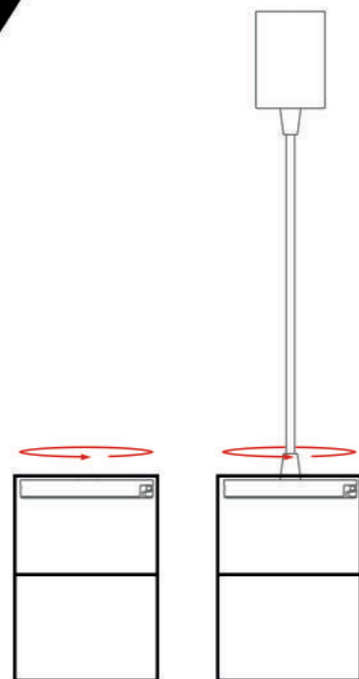
# RIM

**UNISER**





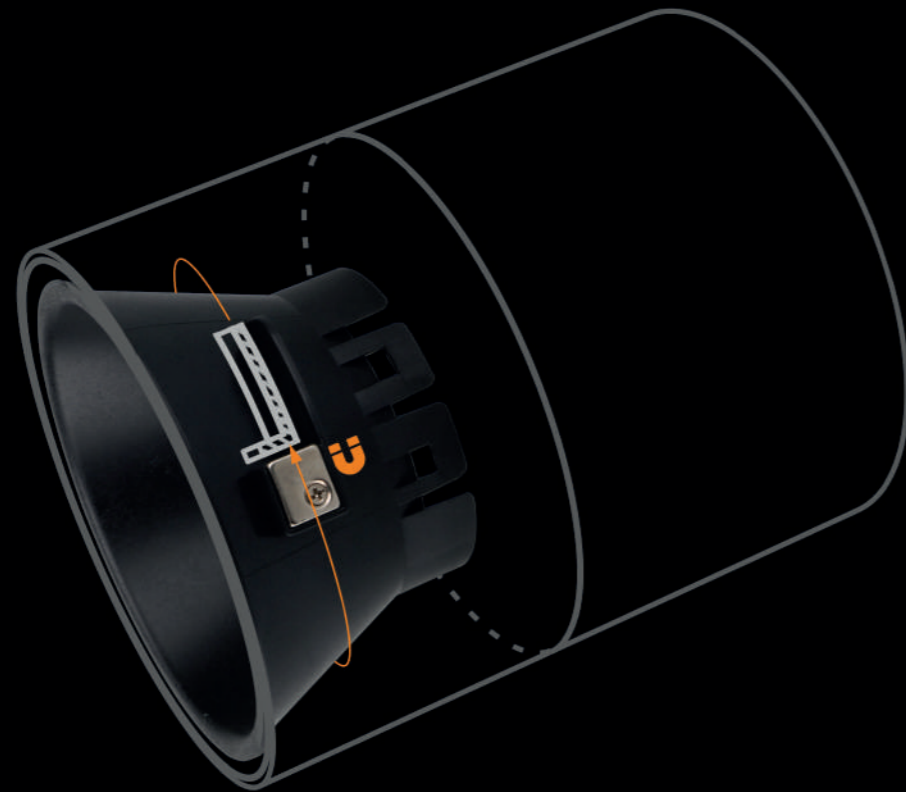
A simple interchangeable mounting part can make the luminaires suits more application.







**GYROMAG** is a mechanical design for interchanging reflectors without any tools. It combines a simple twist and magnetic attachment. Users can feel not only convenience but also reliability.



**UNISER**

# PRODUCT SHOW



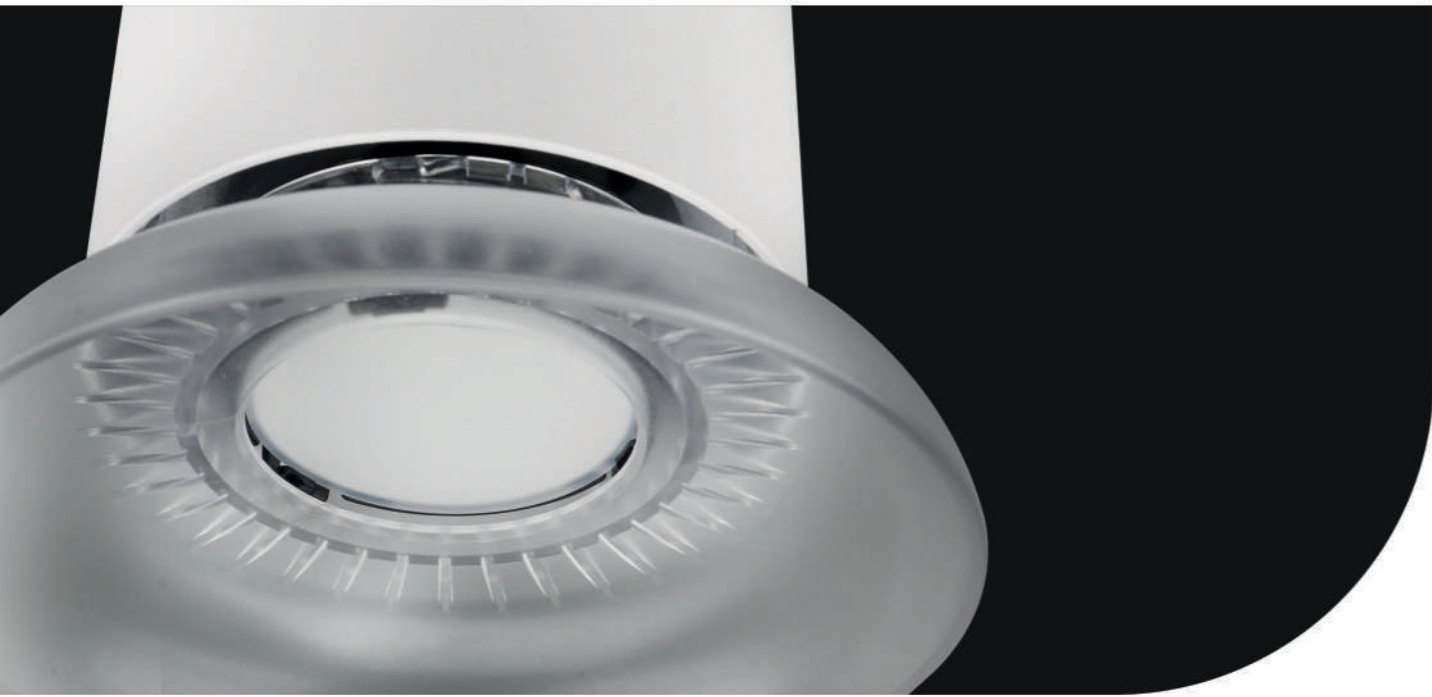
Thanks to the modular concept of Fusion GT, each lamp becomes more unique and versatile than ever to meet any challenging needs.

UNISER



UNISER





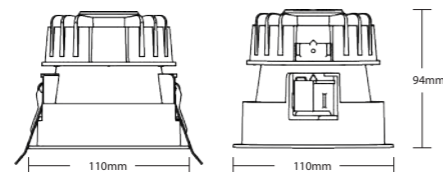
**UNISER**

# Parameter

\*Reflector in black is not available in SMD version.



Finish ●○ Reflector ●○●○●○  
15W (PHILIPS Driver )  
CRI 90+

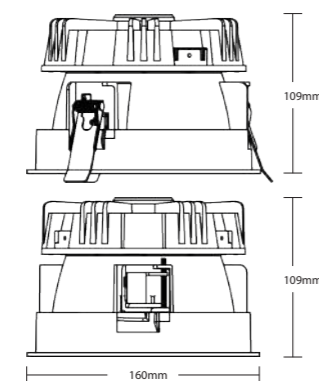


• **SMD**  
2700K/3000K/4000K/5000K  
70°  
1086-1170lm

• **COB**  
2700K/3000K/4000K  
15° | 24° | 36° | 60°  
1248-1379lm



Finish ●○ Reflector ●○●○●○  
25W (PHILIPS Driver )  
CRI 90+

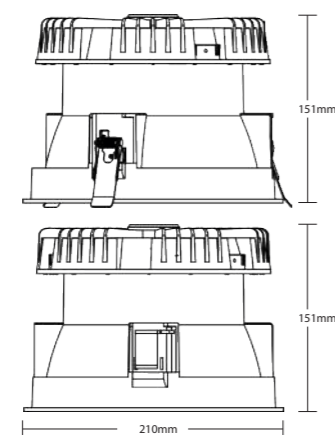


• **SMD**  
2700K/3000K/4000K/5000K  
70°  
2063-2287lm

• **COB**  
2700K/3000K/4000K  
15° | 24° | 36° | 60°  
2050-2454lm



Finish ●○ Reflector ●○●○●○  
35W (PHILIPS Driver )  
CRI 90+



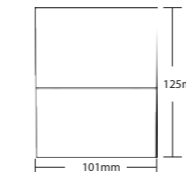
• **SMD**  
2700K/3000K/4000K/5000K  
70°  
2912-3227lm

• **COB**  
2700K/3000K/4000K  
15° | 24° | 36° | 60°  
2795-3308lm

# Parameter



Finish ●○ Reflector ●○●○●○  
15W (AcTEC Driver )  
CRI 90+

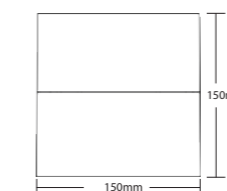


• **SMD**  
2700K/3000K/4000K/5000K  
60°  
1112-1242lm

• **COB**  
2700K/3000K/4000K  
15° | 24° | 36° | 60°  
1116-1353lm



Finish ●○ Reflector ●○●○●○  
25W (AcTEC Driver )  
CRI 90+

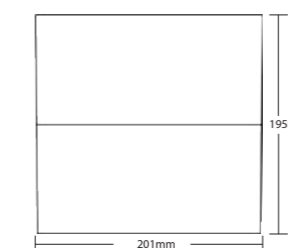


• **SMD**  
2700K/3000K/4000K/5000K  
70°  
2101-2289lm

• **COB**  
2700K/3000K/4000K  
15° | 24° | 36° | 60°  
2040-2423lm



Finish ●○ Reflector ●○●○●○  
35W (AcTEC Driver )  
CRI 90+



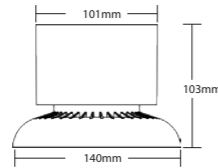
• **SMD**  
2700K/3000K/4000K/5000K  
70°  
3037-3305lm

• **COB**  
2700K/3000K/4000K  
15° | 24° | 36° | 60°  
2377-3035lm

# Parameter



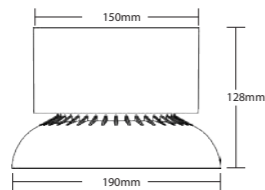
Finish ●○ Fitting ●●●●○  
15W (AcTEC Driver )  
CRI 90+



- **SMD**  
2700K/3000K/4000K/5000K  
85°  
1450-1611lm
- **COB**  
2700K/3000K/4000K  
15° | 24° | 36° | 60°  
1260-1484lm



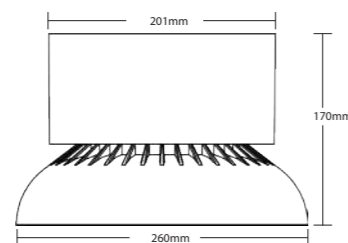
Finish ●○ Fitting ●●●●○  
25W (AcTEC Driver )  
CRI 90+



- **SMD**  
2700K/3000K/4000K/5000K  
90°  
2566-2825lm
- **COB**  
2700K/3000K/4000K  
15° | 24° | 36° | 60°  
2063-2468lm



Finish ●○ Fitting ●●●●○  
35W (AcTEC Driver )  
CRI 90+

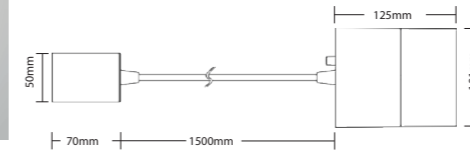


- **SMD**  
2700K/3000K/4000K/5000K  
90°  
3627-3868lm
- **COB**  
2700K/3000K/4000K  
15° | 24° | 36° | 60°  
2596-3211lm

# Parameter



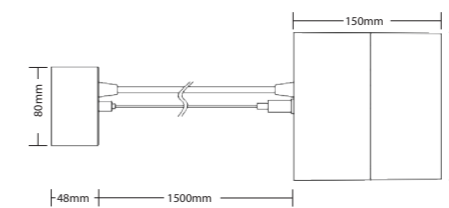
Finish ●○ Reflector ●●●●○  
15W (AcTEC Driver )  
CRI 90+



- **SMD**  
2700K/3000K/4000K/5000K  
60°  
1112-1242lm
- **COB**  
2700K/3000K/4000K  
15° | 24° | 36° | 60°  
1116-1353lm



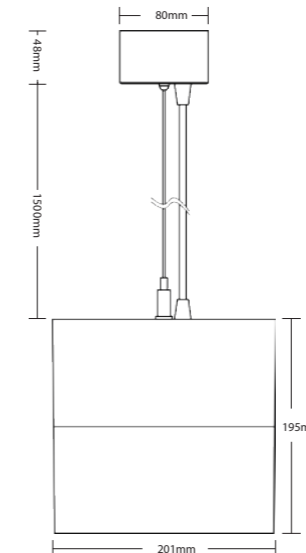
Finish ●○ Reflector ●●●●○  
25W (AcTEC Driver )  
CRI 90+



- **SMD**  
2700K/3000K/4000K/5000K  
70°  
2101-2289lm
- **COB**  
2700K/3000K/4000K  
15° | 24° | 36° | 60°  
2040-2423lm



Finish ●○ Reflector ●●●●○  
35W (AcTEC Driver )  
CRI 90+



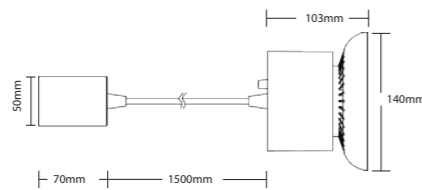
- **SMD**  
2700K/3000K/4000K/5000K  
70°  
3037-3305lm
- **COB**  
2700K/3000K/4000K  
15° | 24° | 36° | 60°  
2377-3035lm



# Parameter



Finish ●○ Fitting ●●●●○  
 15W (AcTEC Driver )  
 CRI 90+

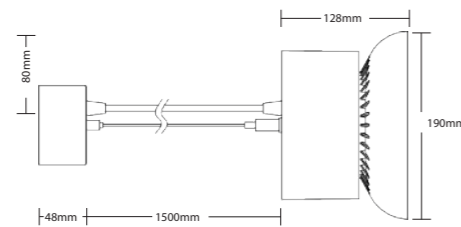


• **SMD**  
 2700K/3000K/4000K/5000K  
 85°  
 1450-1611lm

• **COB**  
 2700K/3000K/4000K  
 15° | 24° | 36° | 60°  
 1260-1484lm



Finish ●○ Fitting ●●●●○  
 25W (AcTEC Driver )  
 CRI 90+

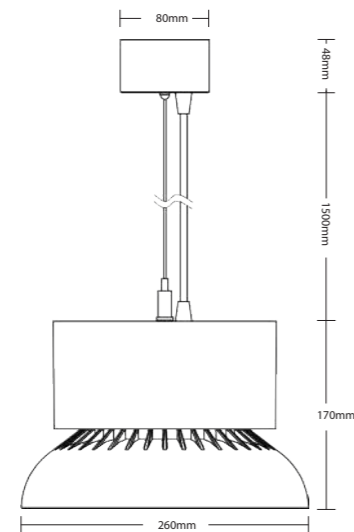


• **SMD**  
 2700K/3000K/4000K/5000K  
 90°  
 2566-2825lm

• **COB**  
 2700K/3000K/4000K  
 15° | 24° | 36° | 60°  
 2063-2468lm



Finish ●○ Fitting ●●●●○  
 35W (AcTEC Driver )  
 CRI 90+



• **SMD**  
 2700K/3000K/4000K/5000K  
 90°  
 3627-3868lm

• **COB**  
 2700K/3000K/4000K  
 15° | 24° | 36° | 60°  
 2596-3199lm

# UNISER

## **Uniser Industries Pvt. Ltd.**

**HO:** 414, Lotus House, New Marine Lines, Mumbai 400020, India

☎ +91-22-35114465 | +91-22-22000515

☎ +91-9867625686

✉ projects@uniserledlights.com | projects@unisersmartspaces.com

🌐 www.uniserledlights.com | www.unisersmartspaces.com